

# Silenziatore

modello  
**SILPOL**

Livelli di rumore in dB 6 BAR  
Noise level at 6 BAR

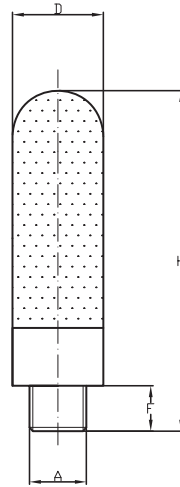
1/8	1/4	3/8	1/2	3/4	1
75	81	82	85	86	87

Livelli di rumore in dB 4 BAR  
Noise level at 4 BAR

1/8	1/4	3/8	1/2	3/4	1
70	75	78	81	83	84

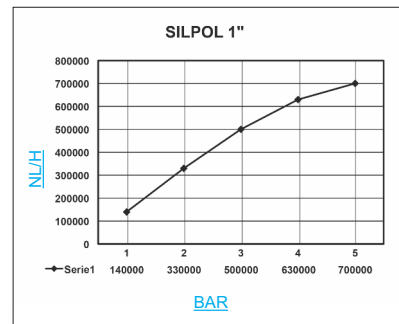
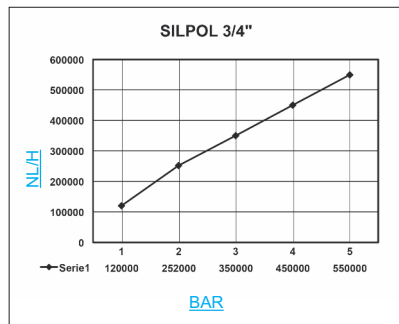
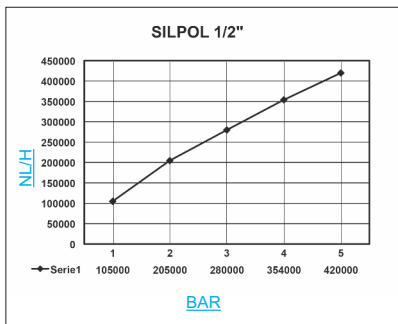
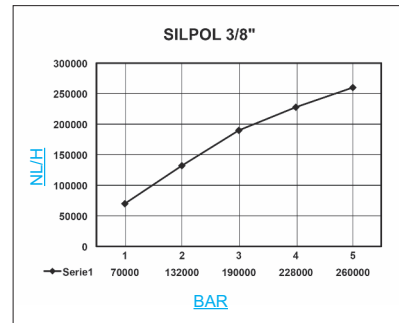
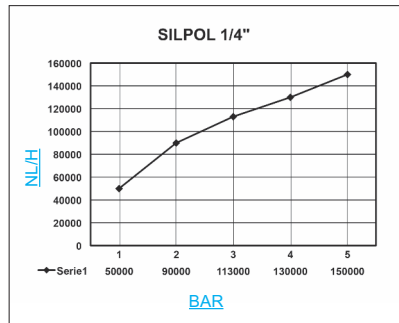
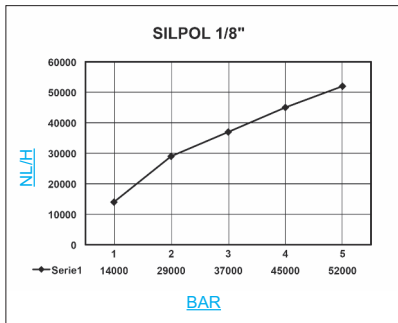
Pressione massima consigliata 10 BAR  
We advice a maximum pressure of 10 BAR

HDPE



modello **SILPOL**

A	F	H	D
M5	4	23	6,5
1/8"	6	34	12,5
1/4"	7	43	15,5
3/8"	11,5	68	18,5
1/2"	11,5	78	23,5
3/4"	15,5	140	38,5
1	19,5	160	49



**SILENZIATORI**  
AIR SILENCERS  
SILENCIEUX  
SCHALLDÄMPFER

**COPOR**

